



VERMONT IN-LIEU FEE PROGRAM

Ducks Unlimited (DU) is recognized as the world's largest private wetlands conservation organization and has more than 80 years of experience restoring and protecting habitat, especially aquatic resources. DU applies a science-based, watershed approach to deliver turnkey mitigation projects that span all types of wetlands, streams, riparian buffer, and upland habitats.

THE DUCKS UNLIMITED VERMONT IN-LIEU FEE PROGRAM (DU-VT-ILF) offers wetland mitigation credits for permitted impacts in four Vermont service areas and adjacent, New York portions of the Richelieu. Through a simple credit transaction process, DU assumes responsibility for delivering compensatory mitigation. Payments to the ILF program furthers DU's mission of providing high quality habitat to waterfowl and other wetland dependent species. Past DU mitigation projects have resulted in the protection and restoration of hundreds of acres of wetlands and adjacent terrestrial habitats.

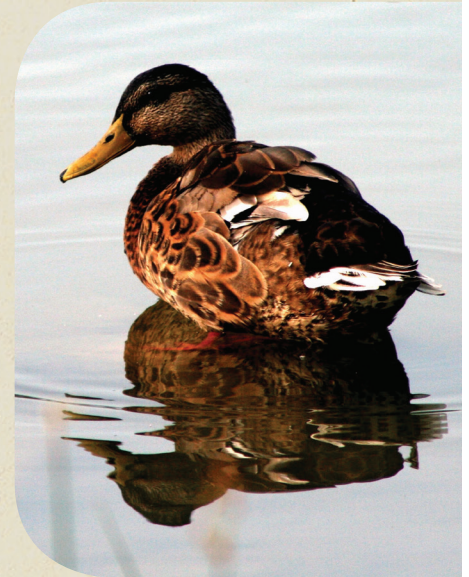
CREDIT PURCHASE STEPS:

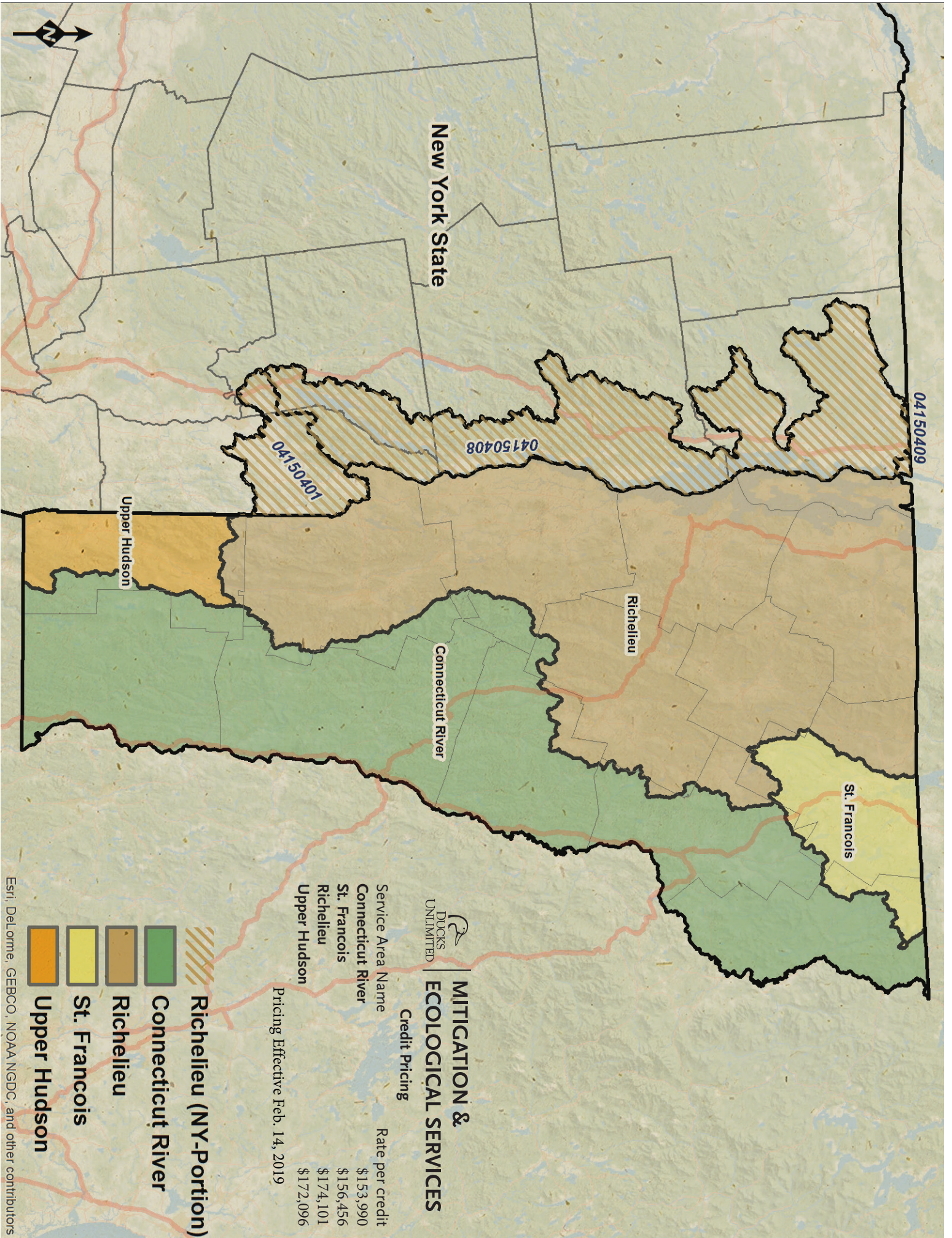
1. The U.S. Army Corps of Engineers reviews proposed impacts and calculates credits.
2. Applicant confirms credit availability with DU and submits a permit application to the Corps requesting approval for purchase of ILF credits.
3. Upon approval, the applicant provides DU with all permit details.
4. The applicant purchases credit(s) and transfers funds to the DU-VT ILF program.
5. DU submits a credit sale letter to the Corps recording the transaction.

(See back for credit pricing and locations)

For more information contact:

PATRICK A. RANEY, PH.D.
Mitigation Program Coordinator
315.708.9614 • praney@ducks.org





New York State

04150409

04150408

04150401

Upper Hudson

Richelieu

Connecticut River

St. Francois








MITIGATION & ECOLOGICAL SERVICES

Credit Pricing

Service Area Name	Rate per credit
Connecticut River	\$153,990
St. Francois	\$156,456
Richelieu	\$174,101
Upper Hudson	\$172,096

Pricing Effective Feb. 14, 2019

-  Richelieu (NY-Portion)
-  Connecticut River
-  Richelieu
-  St. Francois
-  Upper Hudson

Esri, DeLorme, GEBCO, NOAA NGDC, and other contributors